

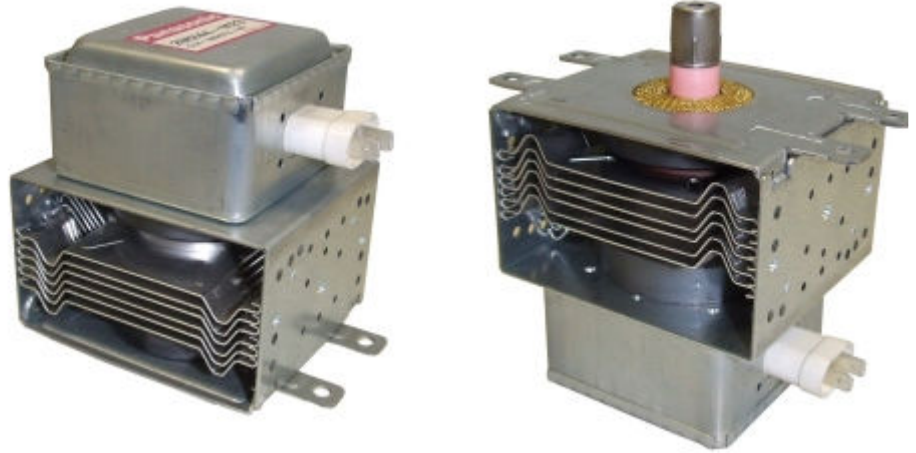
### HIGH POWER MAGNETRONS

## 1010W CW Magnetron TYPE: 2M244-M23 (Panasonic)

### FEATURES:

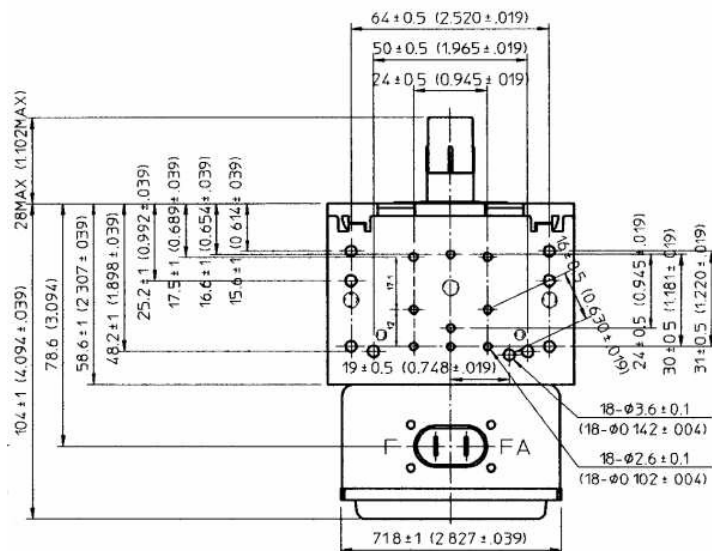
- 2450 MHz
- 1010 W Power Output (matched load)
- Air-cooled anode
- Packaged magnet
- Probe output

approx.: 72 % efficiency



Characteristic	Specification	Typical
SPECIFICATIONS:	.	.
Frequency of operation	2470 MHz	2460 MHz
Frequency variations		+/- 10 MHz
CW Power output :	1060 W	1010 W
Anode Voltage:	4.55 kV	4.35 kV
Anode Current:	370 mA	320 mA
Filament Voltage (standby):	3.5 V	3.15 V
Filament Current:	12 A	10 A
RF launch type:	into rectangular waveguide or into oven cavity directly	
Efficiency	approx.: 72 %	.
Cooling	.	.
Air-cooled	forced air (>1000 l/min)	.
Net weight	Approx. 0.9 Kg	.

Tube Outline Dimensions mm (inches)



Performance Chart

