

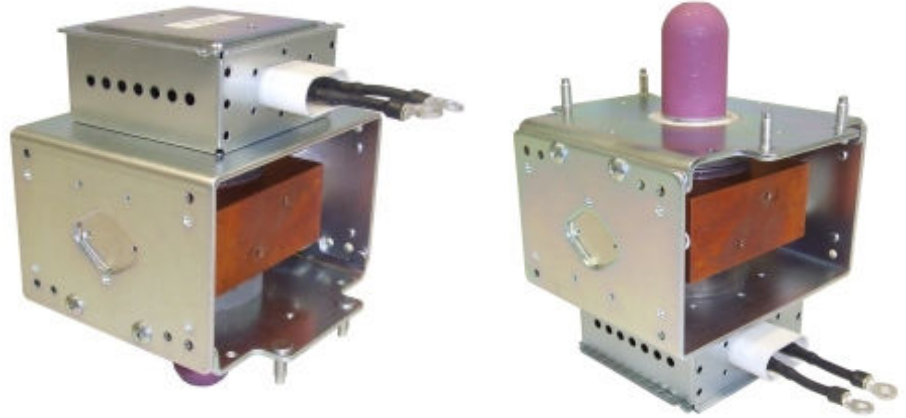
HIGH POWER MAGNETRONS

3000W CW Magnetron TYPE: 2M266-M12WJ (Panasonic)

FEATURES:

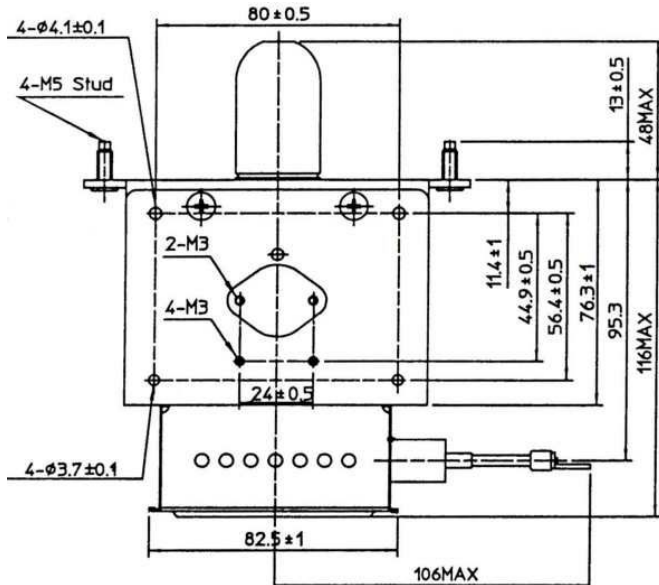
- 2450 MHz
- 3000 W Power Output (matched load)
- Water-cooled
- Packaged magnet
- Probe output

approx.: 73 % efficiency



Characteristic	Specification	Typical
Frequency of operation	2470 MHz	2455 MHz
Frequency variations		+/- 15 MHz
CW Power output :		3000W
Anode Voltage:	5.3 kV	5.1 kV
Anode Current:	900 mA	840 mA
Filament Voltage (standby):	34.4 V	4.0 V
Filament Current:	22 A	22 A
RF launch type:	into rectangular waveguide or into oven cavity directly	
Efficiency	approx.: 73 %	.
Cooling	.	.
Water-cooled	3 bar (>3 l/min)	.
Net weight	Approx. 2.5 Kg	.

Tube Outline Dimensions mm



Performance Chart

